

**3M** Science.  
Applied to Life.™



**Industrial  
Retail  
Business**



# 3M Industrial Retail Business

3M is a global science company that never stops inventing. Using 46 technology platforms, our integrated team of scientists and researchers works with customers to create breakthroughs.

With our unique and differentiated product offering we are making life easier for millions across the globe.

To make our wide product range easily accessible to varied spectrum of customers across home and commercial improvement, micro & small enterprises and automotive aftermarkets we now have a single window through '3M Industrial Retail Business'.

## Home & Commercial Improvement

3M offers wide range of reliable and productivity solutions to help professionals deliver quality job.

The range includes adhesives and tapes, abrasives and other complementing solutions to suit professionals across woodworking, painting, construction, etc.

## Micro & Small Enterprises

A unique range of product offering to specifically suit requirements of Micro & Small Enterprises.

To improve productivity and performance, 3M is relied world over by SME's for their requirements in Adhesives, Abrasives, Tapes, Personal Safety, Electrical and Maintenance solutions, etc.

## Auto Refinish & Care

An extensive range of Appearance, Repair and Care products for Automotive aftermarket.

Professional and Consumer solutions from highly regarded 3M technology stable that help to produce best in class and superior results. The product range includes various form of abrasives, fillers, masking, performance, maintenance and paint finishing solutions.

# 3M™ Synthetic Resin Adhesive

3M™ Synthetic Resin Adhesive is water based adhesive that bonds wood, plywood, laminates, veneers, particle board and MDF to each other. It is a recommended product for bonding two materials where either of the material is porous in nature.

## Features

- Excellent bond for wooden surfaces
- High initial tack
- Excellent coverage
- Fungus resistant
- Resistant to hot/cold water & heat

## Advantages

- Superior bond strength
- Quick handling of substrate
- Superior performance post bonding under all conditions

## Benefits

- Offers superior bonding in less time
- Offers value economy



- Brushable
- Rollable

## Pack Details

- 200 grams, 500 grams, 1 kg, 2 kgs, 5 kgs, 10 kgs, 20 kgs, 30 kgs, 40 kgs (1kg pouch X40) and 50 kgs

# 3M™ WB117 Marine Adhesive

3M™ WB117 Marine adhesive is a new introduction to the 3M synthetic adhesive range that offers higher resistance to humidity, temperature and other tough weather conditions.

## Features

- An extension of D2 range of adhesives.
- For usage in conditions with occasional exposure to running/condensed water.
- Complements well with usage of marine ply to withstand tough weather conditions.

## Advantages

- High humidity resistance
- High Temperature resistance
- Excellent coverage & faster drying

## Benefits

- Longer life of furniture even in tough weather conditions
- Saves time
- Can be easily used in areas with occasional exposure to water i.e. Kitchen cabinets, AC rooms etc.



## Pack Details

- 1 Kg, 5 Kgs, 10 Kgs, 20 Kgs, 50 Kgs

# 3M™ Heavy Duty 20 Spray Adhesive

3M™ Woodworking 20 Spray Adhesive is an aerosol based synthetic rubber adhesive.

## Features

- Bonds wooden substrates to Laminate, Wood, Plywood, Veneer, Board, MDF
- Once applied, wooden substrates will gain initial handling strength in 30 minutes
- Substrate gains 100% strength in 24 hours, post application only

## Advantages

- Single spray (Net content: 390gm) provides approximate coverage up to 67 Square feet
- Specialized for small area application of 4 square feet or less

## Benefits

- Saves time and labor
- Neat and clean job as it overcomes messy conventional application process

- It is a lace spray
- Spray nozzle has three spray settings for three different spray patterns: Low (L) – for substrate width equal to or less than 1 inch, Medium (M) - For substrate width greater than 1 inch & less than 3 inches, High (H) - For substrate width greater than 3 inches.

## Pack Details

- 390 grams / 550ml



# 3M™ Mirror Mount Tape

3M™ Mirror Mount Tape is an easy to apply tape used to mount mirrors on wooden surfaces, tiles, stone, marble, granite and fiber boards.

## Features

- Double side tape that holds mirror to the substrate
- Superior adhesive technology for better bond strength
- Easily conforms to substrates

## Advantages

- Strongly holds the mirror to the substrate without screws
- Reduces the chance of damage to mirrors caused due to drilling

## Benefits

- Saves time and labour
- Enhances aesthetics of mirror specially in case of large mirror fittings
- Can be easily used in applications subjected to vibrations e.g. elevators, cupboards, railways, etc.



- 3M™ Mirror Mount tape must not be used on plaster walls

## Pack Details

- 12mm by 5m – holds maximum weight 10kg
- 24mm by 5m – holds maximum weight 20kg
- All packs come with primer for enhanced adhesion



# 3M™ High Strength Bonding Tape

From the family of 3M™ VHB™Tapes, comes 3M™ High Strength Bonding Tape, a very conformable, double-sided, pressure sensitive, closed cell acrylic foam tape with a PE film liner.

## Features

- Double side tape with high strength
- Durable, 1.1 mm thick tape
- Clean appearance.
- Comes with adhesion promoter (primer 94) for better adhesion.

## Advantages

- Useful with multiple flexibility of materials – 1 substrate flexible OR both substrate flexible OR both substrate rigid.
- Very conformable foam with numerous applications.

## Benefits

- Saves time and labor
- Enhances aesthetics
- Can be easily used in applications subjected to vibrations e.g. elevators, cupboards, railways, etc.



## Pack Details

- 12mm x 5m
- Pack comes with primer for enhanced adhesion

# 3M™ General Purpose Bonding Tape

From the family of 3M™ VHB™Tapes, comes 3M™ General Purpose Bonding Tape, a very conformable, double-sided, pressure sensitive, closed cell acrylic foam tape with a PE film liner.

## Features

- Double side tape with high strength
- Durable, 1.1 mm thick tape
- Clean appearance

## Advantages

- Useful with multiple flexibility of materials – 1 substrate flexible OR both substrate flexible OR both substrate rigid.
- Very conformable foam with numerous general purpose applications.

## Benefits

- Saves time and labor
- Enhances aesthetics
- Can be easily used in applications subjected to vibrations e.g. elevators, cupboards, railways, etc.



## Pack Details

- 12mm x 5m

## 3M™ Fast Bond Tape

3M™ Fast Bond Tape is a thin double-sided tape used for fixing various types of laminates including Acrylic, PVC and Wood. Fast Bond Tape can be used for laminate to laminate, laminate to Plywood and numerous other substrates. Fast Bond tape is an excellent replacement of conventional white adhesive to fix laminates. A great solution for use during refurbishment without removing old laminate (laminate to laminate application).

### Features

- Instant grab adhesive
- Stronger bond
- Easy to apply

### Advantages

- Non-messy application
- Quicker job turnaround time
- Can be used for refurbishing, quick fix jobs

### Benefits

- Saves time and labour



- For quickly bonding Wood to: Laminate, Acrylic, Rigid PVC
- Thickness: 0.22mm

### Pack Details

- 30mm X 20m

## 3M™ Anti-Skid Tape – Wet and Dry

3M™ Safety-Walk™ Anti Skid Tapes are designed to enhance and maintain your home and offices with assurance of safety.

### Features

- Self-adhesive
- Slip-resistant
- Durable

### Advantages

- Unique slip resistant materials that reduce the risk of slipping.

### Benefits

- Helps overcome occupational hazards like slips and falls which are common causes of disabilities



- Wet Surface applications: bathroom floor, bath tubs, kitchens, etc.
- Dry Surface applications: stairs, inclines, corridors, etc.

### Pack Details

- 2.5cm X 3.6m

## 3M™ GP Masking Tape

3M General Purpose Masking Tape that can be used for holding, bundling, sealing and a vast number of other jobs where a pressure-sensitive tape is needed. Heavy thickness crepe paper backing for good paint lines which is easy to tear and pressure sensitive.

### Features

- 100% guaranteed length
- No adhesive transfer on substrate post removal
- Hand tearable

### Advantages

- Holds substrate strongly
- Resists lifting or curling or slivering

### Benefits

- Saves time and labor (no need for substrate cleaning, post tape removal)
- Better holding strength



- For holding, sealing, bundling, etc.

### Pack Details

- Available tape length: 20m, 30m and 40m
- Available tape width: 12mm, 24mm, 36mm and 48mm

## 3M™ Carpenter Masking Tape

3M™ Scotch™ masking tape for carpenters and painters is a pressure sensitive tape used for wall and wood working. It comes with crepe paper backing with rubber adhesive on top for adhesion.

### Features

- 100% guaranteed length
- No adhesive transfer on substrate post removal
- Hand tearable

### Advantages

- Gives sharp painting edges
- Holds substrate strongly
- Resists lifting or curling or slivering

### Benefits

- Saves time and labor (no need for substrate cleaning, post tape removal)



### Pack Details

- Available tape length: 20m, 30m and 40m
- Available tape width: 12mm, 24mm, 36mm and 48mm



# 3M™ 2207 Protection Tape

3M 2207 Protection Tape is made of highly conformable polyethylene film backing coated with synthetic rubber adhesive. This product is recommended for use on floors and other surfaces while painting and wood working.

## Features

- Highly conformable polyethylene film
- Strong polymer film
- Medium tack pressure sensitive adhesive

## Advantages

- Highly conformable
- Higher bond strength
- Repositionable

## Benefits

- Provides adhesion to multiple surfaces



- For use on substrates such as Plastic, Aluminium, Stainless Steel, Painted surfaces and other polished/ glossy / smooth surfaces

## Pack Details

- 1200mm X 100m, 600mm X 100m, 600mm X 30m

# 3M™ 233Q Premium Wetordry™ Abrasive Sheets

3M™ 233Q Premium Wetordry™ abrasive sheets is a Wetordry™ sanding sheet that offers super fine & uniform surface finish on wood coatings i.e. NC/melamine/PU/ polyester surface sanding. Specifically designed for wet sanding application, the product offers premium performance with much lesser scratches on the surface than any competition.

## Features

- Sharp silicon carbide abrasive with waterproof resin coat
- Higher curl resistance (ability to withstand backing sheet in wet condition)

## Advantages

- Cuts faster than most other brands

## Benefits

- Offers smooth, uniform surface finish



## Pack Details

- Available in grits: 60, 80, 100, 120, 150, 220, 320, 400, 600, 800, 1000, 1500, 2000
- Available in rims of 250 units (50 units/pack X 5 Nos.)



## 3M™ 518 Wetordry™ Abrasive Sheets

3M™518 is a Wetordry™ sanding sheet that offers fine and uniform surface finish on plaster, wall putty as well as wooden surface.

### Features

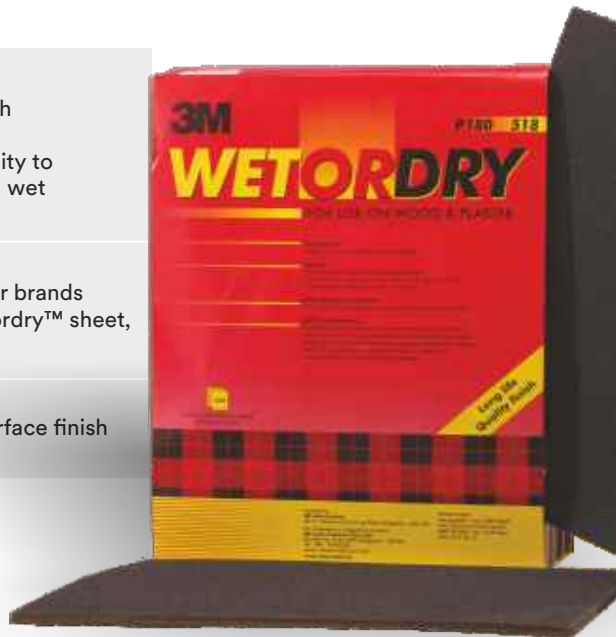
- Sharp abrasive mineral with waterproof resin coat
- Higher curl resistance (ability to withstand backing sheet in wet condition)

### Advantages

- Cuts faster than most other brands
- On folding 3M™ 518 Wetordry™ sheet, shelling is lower

### Benefits

- Offers smooth, uniform surface finish



### Pack Details

- Available in grits: 60, 80, 100, 120, 150, 220, 320, 400, 600, 800, 1000, 1500, 2000
- Available in rims of 250 units (50 units/pack X 5 Nos.)

## 3M™ 314D Abrasive Cloth Rolls

3M™ 245DP Abrasive cloth roll is an Alox based cloth roll completely made using synthetic adhesives. Generally used in initial wood sanding applications for raw wood sanding.

### Features

- Alox based minerals for rugged sanding
- Synthetic adhesive based product

### Advantages

- Higher material removal and higher cut rate than competition

### Benefits

- Delivers uniform results across seasons unlike competition that uses animal glue



- Use wet or dry

### Pack Details

- Available in grits: 60, 80, 100 and 120

# Scotch-Brite™ All Rounder Handpad

3M™ All Rounder handpad is a non woven abrasive hand pad with impregnated aluminum oxide abrasive grains for consistent, longer lasting, superior performance.

## Features

- Easily reaches corners & hard to reach places due to high conformability

## Advantages

- Lasts longer
- Soft On hands

## Benefits

- Offers consistent finish



- General purpose - Cleaning
- Finishing
- Light rust removal

## Pack Details

- Single Pack Flow Wrap (6in X 9in)
- Pack of 5 (Each pad of size 6in X 9in)

# 3M™ General Purpose Handpad (Mighty Blue)

Generate good finish. Can be used for paint scuffing.

## Features

- Aluminum Oxide
- Open Construction
- Spring Action
- 3 - Dimensional

## Advantages

- Single solution for general applications

## Benefits

- 3 times more true surface area
- Consistent Finish
- Conformable
- Soft on Hands
- Lasts longer than emery paper
- One solution (starting point) for general



- General purpose - Cleaning
- Finishing
- Light rust removal

## Pack Details

- Pack of 5 (6 x 9)

# 3M™ Fine Finish Handpad (7448)

Generate extra finish without affecting dimensional tolerances. More suitable for superior finishes on stainless steel.

## Features

- Silicon Carbide
- Open Construction
- Spring Action
- 3 - Dimensional

## Advantages

- Superior Finish Quality

## Benefits

- Excellent for final finishing
- Generate unique hair lines on stainless steel



- Metal
- Wood
- Plastic

## Pack Details

- Pack of 5 (6 x 9)

# 3M™ SS Finishing Handpad (7446)

Provides unique hairline finish. Ideal for blending scratches. Merging of weld marks.

## Features

- Silicon Carbide
- Open Construction
- Spring Action
- 3 - Dimensional

## Advantages

- Provides consistent finish till the end

## Benefits

- Unique antique finish
- No contamination and safe to work
- Provides differentiated finishes



- SS Products
- Handicrafts
- Builders Hardware
- Furniture

## Pack Details

- Pack of 5 (6 x 9)

# 3M™ Multi-Purpose Handpad (7447)

Provides unique hairline finish. Merging of weld marks.  
Metal Wood Ceramics

## Features

- Aluminum Oxide
- Open Construction
- Spring Action
- 3 - Dimensional

## Advantages

- One solution for multiple applications
- High conformability
- Lasts Longer

## Benefits

- Consistent finish
- Flexible - easily reaches corners and hard to reach places
- Soft on hands



- Deburring
- Cleaning
- Blending
- Finishing
- Polishing

## Pack Details

- Pack of 5 (6 x 9)

# 3M™ Heavy Duty Handpad

De-scaling and Rust Removal with heavy stock removal.  
Finds application across manufacturing segments such as Auto components, Metal fabrications, Ceramic Tiles and Sanitary ware, Cooking Utensils, etc.

## Features

- Aluminum Oxide
- Tough, Tight and Dense web

## Advantages

- Ideal for removal of very heavy rust and scale

## Benefits

- High cut, aggressive - saves time, longer life



- Finishing weld seams
- General sheet metal and metal workshop application
- Descaling
- Rust removal

## Pack Details

- Pack of 5 (6 x 9)



## 3M™ Flap Brushes

Brushes are impregnated with abrasive mineral to give uniform cut and finish throughout product life. Open, flexible flap construction is soft and pliable to produce uniform surface finishes without chatter marks. Softer, less aggressive construction for finer blending and finishing.

### Features

- Flaps of ScotchBrite™ material bonded to a fibre core. Open, Flexible

### Advantages

- Softer, less aggressive construction for finer blending and finishing

### Benefits

- Provides uniform cut and finish



- Cleaning and light deburring of various substrates, satin finish on metals.

### Pack Details

- 6X1X2, 6x2x2, 8x1x3, 8x2x3

## 3M™ Combi Brushes

Alternate flaps of Scotch-Brite web and X- weight coated abrasive cloth, Flaps of Scotch-Brite material bonded a fibre core.

### Features

- Combi - Aluminum oxide and silicon carbide

### Advantages

- Better finishes compared to coated abrasives.
- Faster cuts compared to Non-woven

### Benefits

- Three dimensional Scotch-Brite™ web produces consistent, repeatable results without damaging the workpiece
- Open, flexible flap construction is soft and pliable to produce uniform surface finishes without chatter marks.
- Used as part of a match & finish system



- Combi - creating hairline and satin finishes
- Mini cleaning, finishing, graining

### Pack Details

- 100X100X19
- Available in grits: 80 & 150

## 3M™ 381CP Fiber Disc

3M™ Fiber Disc (381C) contains aluminum oxide mineral that gives fast cut rate and lasts longer. So now, sanding can be done faster and with much ease. This product is majorly used by carpenters for quick sanding of wooden furniture.

### Features

- Aluminium Oxide Grains
- Vulcanized fiber backing

### Advantages

- Best suited for wood sanding applications

### Benefits

- Cuts Faster
- Lasts Longer
- High cutting action & long product life on medium pressure applications



- Grinding and finishing weld seams
- General sheet metal and workshop application

### Pack Details

- 4in, 5 in, 7in
- Available in Grits – 24,36,60, 80 to 120

## 3M™ Cubitron™ Fiber Disc

3M™ Cubitron™ Fiber Disc is power packed for heavy grinding and weld removal applications on mild steel and stainless steel.

### Features

- 3M™ Cubitron™ Abrasive Grain
- Fiber
- Closed
- Resin
- Grinding Aid

### Advantages

- Premium product with an aggressive cut and longer life
- Recommended for high pressure applications

### Benefits

- Grinding aid reduces heat build up to give a cooler cut on heat sensitive metals



- Weld Grinding and stock removal

### Pack Details

- 4in, 5in, 7in
- Available in Grits: P36, P60, P80, P120

## 3M™ 982 Cubitron™ II Fiber Disc

3M™ Cubitron™ II Fiber Disc 982C slices through carbon steel with 3M Precision Shaped Grain. Exceptionally high cut rate, durability and life compared to other fiber discs. All with less grinding pressure – that means less operator fatigue, faster throughput and more parts per disc.

### Features

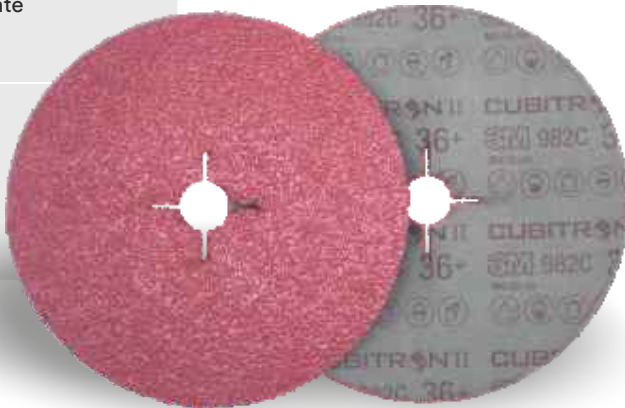
- Cubitron™ II Abrasive grain
- Fibre
- Resin

### Advantages

- Unmatched faster cut rate
- Longer Life
- Cooler Cutting

### Benefits

- Lower Abrasive Costs
- Lesser downtime
- Lesser waste
- Lesser operator fatigue
- Power Savings



- Weld Grinding and heavy stock removal

### Pack Details

- 100x16, 125x22, 178x22
- Available in Grits: P36, P60, P120

## 3M™ Alox Rigid Grinding Disc

Aluminium disc A24 DC wheels are specifically suited for mild steel grinding applications. Provides high and consistent quality performance.

### Features

- Aluminium Oxide
- Resin bonded

### Advantages

- Cuts faster, lasts longer

### Benefits

- Consistent Grinding



- Weld bead grinding, spatter removal

### Pack Details

- 100x4x16, 100x6x16, 125x6x22, 180x6x22



## 3M™ Greencorps™ Rigid Grinding Disc

The 3M™ Greencorps™ rigid grinding disc is a 6mm thick depressed center disc for right angle tool and is designed to provide high rate of stock removal and long life to meet all your toughest grinding needs.

### Features

- 3M™ Cubitron™ Abrasive Grain
- Resin bonded

### Advantages

- Longer life, Faster Cut Rate

### Benefits

- Better finish
- No contamination of weld



- Weld bead grinding
- Corner weld grinding
- Spatter removal

### Pack Details

- 100x6x16, 125x6x22, 180x6x22, 230x6x22

## 3M™ Greencorps™ Flexible Grinding Disc

The 3M™ Greencorps™ flexible grinding disc is an aggressive grinding disc for right angle tools and is specially designed to have the flexibility of a fiber disc and the versatility of a type 27 grinding disc.

### Features

- 3M™ Cubitron™ Abrasive Grain
- Resin bonded

### Advantages

- Saves time due to faster grinding
- Lower vibrations offer better comfort to operator

### Benefits

- Does not leave any black marks
- No contamination of weld



- Cutting sheet metal, frames, rails, bars

### Pack Details

- 100x3x16, 125x3x22, 180x3x22



# 3M™ Alox 14" Cut Off Wheel

When it comes to faster, easier metal cutting, it defines the performance benchmark. With their enhanced technological edge.

## Features

- Aluminium Oxide
- Resin bonded

## Advantages

- Faster, Easier Metal Cutting

## Benefits

- Produces less burr meaning less rework
- International quality and safety features for a cut above the ordinary



- Cutting sheet metal, frames, rails, bars, rods, clamps and rusted bolts.

## Pack Details

- 100x3x16, 180x3x22, 305x3x25, 355x3x25

# 3M™ Greencorps™ Cut Off Wheel

3M™ Greencorps™ cut-off wheels assure longevity than conventional cut-off wheels. Provides high cut rates and longer life to most materials – especially stainless steel.

## Features

- 3M™ Cubitron™ Abrasive Grain
- Resin bonded

## Advantages

- Lasts longer than the aluminum oxide based wheels

## Benefits

- The combination of high speed rating and Cubitron™ Mineral content means a cool, sharp, quick cut with minimal product wear



- Cutting of long products like pipe, rod, flats and angles, sheet metal, clamps & rusted bolts.
- Cutting frames, rails, bars.

## Pack Details

- 75x0.8x9.5, 100x1x9.5,, 100x1.6x16, 180x2x22, 305x3x25, 355x3x25

# Radial Flap Disc 563D

3M™ 563D radial flap disc is a fast cutting disc with exceptionally long life and minimal heat generation. Provides optimal performance both on mild steel and stainless steel.

## Features

- Aluminium Zirconia
- X- weight cotton cloth on reinforced glass fiber resin

## Advantages

- Suitable for all metals
- High Cut Rate
- Longer Life

## Benefits

- High cut rate
- Longer life
- Does not gauge the material
- Better finish



## Pack Details

- 4 1/2 x 22
- Available in grits: P40, P60, P80, P120

## RPL+ (Rust Penetrant Lubricant)

A multipurpose light oil formulation penetrates to quickly free rusted nuts, bolts and prevents adhesion of light loaded sliding parts. Displaces moisture, can be used for displacing moisture for electrical components and windings. Prevents corrosion by depositing a temporary ultra-thin film on the surface of the metal. Recommended for maintenance and repair in automotive, marine, industrial and household materials.

- Multi-purpose light oil formula
- Lubricant
- Penetrant
- Prevents Rust
- Demoisturises
- Rust & corrosion prevention by depositing an ultra-thin film that coats & penetrates the surface pores of metal
- Excellent penetration properties to quickly free rusted bolts & nuts
- Relieves binding of sliding parts
- Displaces moisture to dry out damp electrical parts, improve electrical circuit conductivity
- Lubricates metal, plastic or rubber moving parts



- Shake the can well. Hold can upright and push actuator on top of can all the way down to apply uniform spray. If using the extension tube insert it into the actuator using twisting motion. Best results are obtained when material is at room temperature. Handy snorkel tube aids application on hard to reach areas.

### Pack Details

- Available in 325g, 170g, 50g

## 3M™ Stainless Steel Cleaner

The one step spray that keeps stainless steel and other metal surfaces gleaming like new.

### Features

- A high performance aerosol product that cleans and polishes a variety of metal surfaces to a high gloss in one step. 3M™ Stainless Steel Cleaner and Polish leaves a light protective film on the surface to resist fingerprints and streaking.

### Advantages

- Cleans, polishes & protects in one step
- Leaves a light protective film that restores sheen to factory finish
- Helps hide blemishes & slows re-soiling
- Reduces fingerprints & resists streaking
- No greasy film residue
- Pleasant citrus fragrance
- For best results use with the Scotch-Brite™ High Performance Cleaning Cloth

### Benefits

- Environmentally preferable solution
- Water based chemistry – no solvents
- All ingredients are NSF Certified
- Less than half the allowable limit of VOC as permitted by the California Air Resource Board (CARB) VOC Regulations
- Nonflammable
- Excellent vertical cling & small spray pattern help reduce overspray & waste

- Can be used on: Stainless steel, chrome, aluminum, laminated plastics, enamel, plexiglas, ceramics
- Excellent cleaner and polish for: elevators, escalators, drinking water fountain, backsplash, restaurant and food processing equipment



### Pack Details

- 295ml, 750ml

## 3M™ 213Q Wetordry™ Abrasive Sheets

213Q is the most trusted Premium Wetordry™ abrasive sheets offering from 3M. The product is trusted by OEMs across the world with superior latex coated backing with aluminium oxide mineral. The product is excellent to get fine and superior finish for automotive applications.

- Superior Latex Coated Backing
- Backing does not tear easily, offers longer & consistent life
- Offers fine feather edging
- Consistent scratch pattern
- Flexible and strong backing
- High strength aluminum oxide mineral helps to get longer & consistent life and does not leave deeper scratch marks
- Provides superior surface finish and helps to avoid expensive rework



### Pack Details

- Pack of 50 units (9in X 5.5in / 9in X 11in)
- Available in grits: 220,320,400,600 & 800

## 3M™ 234Q Wetordry™ Abrasive Sheets

3M™ 234Q Premium Wetordry™ abrasive sheets is a Wetordry™ sanding sheet designed for automotive application that offers super fine & uniform surface finish on putty, fillers, primer and paint surfaces. Specifically designed for wet sanding application, the product offers premium performance with much lesser scratches on the surface than any competition.

- Sharp silicon carbide abrasive with waterproof resin coat
- Higher curl resistance (ability to withstand backing sheet in wet condition)
- Cuts faster than most other brands
- Offers smooth, uniform surface finish



### Pack Details

- Available in rims of 250 units (50 units/pack X 5 Nos.)
- Available in grits – 60, 80, 100, 120, 150, 220, 320, 400, 600, 800



## 3M™ 101Q GA Wetordry™ Abrasive Sheets

3M™101Q is a Wetordry™ sanding sheet that offers fine and uniform surface finish on putty, filler, primer and paint surfaces and various other automotive applications.

- Sharp abrasive mineral with waterproof resin coat
- Higher curl resistance (ability to withstand backing sheet in wet condition)
- Cuts faster than most other brands
- On folding 3M™ 518 Wetordry™ sheet, shelling is lower
- Offers smooth, uniform surface finish



### Pack Details

- Available in rims of 250 units (50 units/pack X 5 Nos.)
- Available in grits – 60, 80, 100, 120, 150, 220, 320, 400, 600, 800

## 3M™ 401Q Microfine

Levels minor dust nibs and for light sanding to adjust mismatched orange peel on all automotive paints. Fastest cutting, longest lasting abrasive to improve surface finishing.

- Flexible & Strong Backing
- Silicon Carbide mineral
- Excellent Life
- Can be used for wet or dry sanding
- Finer sanding with no deeper scratches
- Offers uniform cutting and long life



### Pack Details

- Pack Size: 50 per pack ( 9" X 5.5")
- Available in grits: 1000, 1200, 1500 & 2000

## Bondo Light Weight Body Filler

Bondo Light Weight Body Filler is used to fill the dents of the vehicle surface after accident repair. The product has unique microsphere technology that helps fill the dent faster and reduce the weight on repaired panel.

- Fills dents with minimal number of coats
- Easy to sand
- Gives excellent adhesion to various substrates including Mild Steel (MS), Galvanised Iron (GI), Aluminium, FRP and range of plastics
- Comes with hardener



### Pack Details

- Available in 1kg and 3kg packs

## 3M™ Auto Refinish Masking Tape

Masking tapes are used to protect the non repair areas of the vehicle from paint overspray and avoid the time consuming cleaning process.

- High tack on various substrates
- Temperature resistant up to 60 degree
- Provides good adhesion on metal, plastic and rubber substrates
- No adhesive temperature during paint baking process
- Ensures proper masking during the painting process
- Helps to avoid rework and time consuming cleaning activity of overspray



### Pack Details

- Available in width sizes: 18mm, 24mm, 48mm
- Available in lengths: 20m, 25m, 30m

## 3M™ Finesse-It™ Marine Paste

Specially designed medium cutting, semi paste compound for removing 1200, 1500, and 2000 grit sanding scratches in automotive paints including clear coats.

- Semi-paste compound
- Removes scratch marks made of microfine sanding
- Easy to Spread
- Works well on all PU surfaces
- Very good gloss
- Helps to cut all surface defects



### Pack Details

- Available in 100g, 200g packs

## 3M™ Perfect-it™ 1-Step Finish Compound

Fast cutting and fine finish. Effectively removes P1200 grade and finer sand scratches. Easy cleanup.

- High performing semi-paste single step rubbing compound
- Removes 1500 & 2000 microfine sand marks
- Can be used by hand or machine
- Clear coat safe
- Easy to clean.
- Good for hand and machine application
- Produces exceptional gloss which lasts longer
- Rubbing is faster as it is single step - saves time



- Remove the defects from new painted or scratches from aged surface using microfine paper. Apply 1-Step compound in uniform pattern on the rub the surface till the sanding marks are removed.
- \* Recommended to use 3M Premium Liquid Wax for enhanced gloss

### Pack Details

- Available in 100g, 500g packs

## 3M™ Perfect-It™ II Rubbing Compound

3M™ PII Rubbing Compound produces minimal compound swirl marks while buffing to a high gloss. Use with recommended wool/ foam pad. Medium cutting paste rubbing compound that removes sand scratches and leaves a fine finish on automotive and other PU coating paints. Proven performer. A medium cutting, paste compound for 1200, 1500, and 2000 grade sanding scratches in automotive paints including clear coats.

- Liquid compound for restoring the glossy finish
- Removes paint defects like light oxidation, scratches, car wash scratches and so on
- Can be used with machine and recommended compounding pad.
- Easy to spread and generate less amount of dust
- Removes scratch marks
- Excellent gloss with minimal swirl marks



### Pack Details

- Available in 1 Ltr, 5 Ltr packs

## Meguiar's Diamond Cut Compound

Meguiar's Diamond Cut Compound is fast-cutting compound for paint correction and swirl removal. It level severe scratches and defects on automotive paints with a high solids content. Diamond Cut Compound is low dusting and leaves minimal swirls.

- It uses diminishing abrasive technology to level sanding scratches and severe paint defects using rotary polisher. Yet, because the abrasives gradually disappear, this compound finishes with only light swirls, which can be easily removed with a finishing polish



### Pack Details

- Available in 1 Gallon



## 3M™ Perfect-It™ EX Rubbing Compound

3M™ Perfect-It™ EX Rubbing Compound is designed to remove P1200 and finer scratches with either a 3M wool pad or a 3M foam compounding pad. It is designed to work over a broad climatic range, including extreme conditions. The non-gritty formula works on all types of automotive paints, leaving an extremely fine finish with easy clean up.

- Excellent Finish
- No / Minimal dust generation
- Removes various types of scratch marks and dent nibs
- Easy Clean up



### Pack Details

- Available in 1 Quart

## Bondo Wool Compounding Pad

100% wool, single sided, compounding pad. Refines P1200 and finer sand scratches and other paint surface defects. Suggested for use with Perfect-It™ Rubbing Compound.

- Quick change backing system
- Precise centering for vibration free buffing
- Effective removal of sanding marks and surface defects
- Recommended to use with a rotary sander



### Pack Details

- Available in singles pack of 8inch diameter

## 3M™ Imperial Hand Glaze

Non-silicone, non-wax hand glaze. It is used by hand to refine and fill swirl marks after machine polishing. This product has been formulated to work on all colors and can be painted over.

- Easy to apply
- Spreads easily on the surface
- Removes swirl marks



- Wash and dry vehicle (Do not apply in direct sunlight or onto a hot surface)
- Apply a thin uniform film to the paint surface using a wax foam applicator or a clean, soft cotton terry cloth towel folded several times to form a thick applicator pad.
- Allow to dry to a complete haze.
- Buff to a high gloss using a 3M™ Multipurpose Performance Cloth or a clean, soft cotton terry cloth towel.

### Pack Details

- Available in 100ml pack

## 3M™ Premium Liquid Wax

Clear coat safe wax. Use on all cured paint finishes. For use by hand or with an orbital polisher. Produces a good-gloss, durable finish on both new and used paint surface.

- Easy application
- Durable UV protection and water repellence
- Good gloss



### Pack Details

- Available in 50ml, 100ml, 200ml, 1Kg and 5 Kg packs

## 3M™ Cream Wax

Cream wax helps to enhance gloss and shine on the paint surface. Clear coat safe wax. Use on all cured paint finishes. For use by hand or with an orbital polisher. Produces a high-gloss, deep-luster, durable finish on both new and used paint surface.

- Easy application
- Durable UV protection and excellent water repellence
- Protects paint surface from oxidation
- Produces excellent & long last gloss



### Pack Details

- Available in 220g pack

## Meguiar's Hi Tech Yellow Wax

Provides ultimate high gloss protection to any previously cleaned and polished paint finish.

- Premium yellow carnauba wax blended with silicones, polymers & other waxes
- Adds richness and depth of color
- Excellent gloss



### Pack Details

- Available in 1 Gallon and 16 Oz

## Meguiar's Quick Detailer

Formulated to work especially well on dark colors and is perfect for removing dust and fingerprints. Leaves an ultra-slick, ultra-dark appearance and is safe to use on all paint finishes.

- Delivers a dark, super glossy finish.
- Makes black cars blacker!
- Delivers same cleaning ability as our other detailers



### Pack Details

- Available in 1 Gallon and 16 Oz

## 3M™ Ultimate Dresser

Restores that deep black new look to tires and restores a deep rich natural appearance to exterior rubber bumpers or vinyl moldings. Cleans and rejuvenates.

- Restores deep black new look for plastics, tyre & vinyl mouldings of the car
- No sticky effect and does not allow dust to settle
- Durable finish



### Pack Details

- Available in 250ml pack



## 3M™ Multipurpose Performance Cloth

3M™ Microfiber Detail Cloth is a unique, super-soft, non-linting cloth designed to remove oily or filmy residue including waxes, polishes, glazes and fingerprints without scratching or streaking delicate surfaces. It is ideal for painted/clear coated surfaces, chrome, glass, dashboards, and more.

- Cleans well without streaks marks
- Ideal to give excellent finish after application of wax, polishes, glazes, etc
- Removes filmy residues of wax or polish easily
- Absorbs dust, hence no or very less scratch marks on the painted surface



- Best suited to clean the painted surface, glasses, plastics or wood finishes.

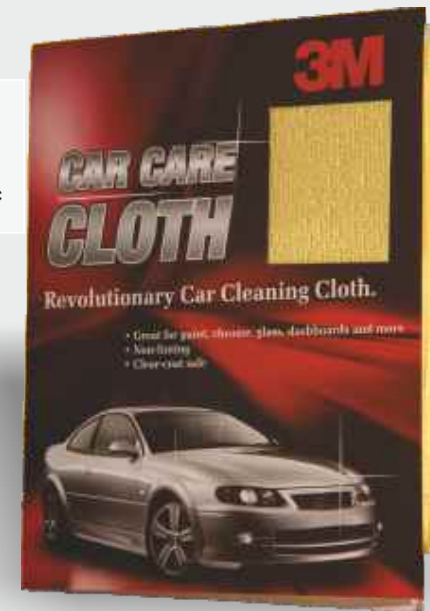
### Pack Details

- Available in singles pack of size : 40.6cm X 40.6cm

## 3M™ Car Detailing Cloth

3M™ Microfiber Detail Cloth is a unique, super-soft, non-linting cloth designed to remove oily or filmy residue including waxes, polishes, glazes and fingerprints without scratching or streaking delicate surfaces. It is ideal for painted/clear coated surfaces, chrome, glass, dashboards, and more.

- Cleans well without streaks marks
- Absorbs dust and water easily
- Ideal to give excellent finish after application of wax, polishes, glazes, etc



### Pack Details

- Available in singles pack of size : 36cm X 30cm

## Bondo Multi Purpose Cleaner

Bondo Multipurpose cleaner is a heavy duty cleaner designed for both interior and exterior vehicle cleaning applications. It removes oil ,grease and other toughs soils from vehicle engines, tyres, wheels and other heavily soiled surfaces. Bondo Multipurpose cleaner is good to remove the stains and soil from carpets, fabric , upholstery, vinyl, leather and other interior vehicle surfaces.

- Helps to remove soil and dirt from carpets, fabric, upholstery, vinyl, leather and other vehicle interior and exterior surfaces
- Paint and plastic safe



### Pack Details

- Available in 5 Ltr pack

## Bondo Car Wash Shampoo

Bondo Car Wash Shampoo is a highly concentrated liquid soap which develops heavy bodied, long lasting foam and quickly removes dirt and road film from exterior automotive surface. Once cleaned and dry it leaves a clean surface without any streaks.

- Removes tough dirt and road grime
- PH balanced, easy rinse-off rich foam formula
- Safe on paint
- Effective with hard and soft water
- Gives a glossy appearance - no streaks or water marks after washing



### Pack Details

- Available in 5 Ltr pack

## Bondo All Purpose Dressing

Bondo All purpose dressing is one stop application that shines, conditions and protects vinyl , leather, plastic and tyre and engine areas of the vehicle. The product is safe to use on painted surface.

- Helps to shine, condition and protect various surfaces - including leather, vinyl, plastic, tyre and engine area
- Safe on paint and plastic surface



### Pack Details

- Available in 5 Ltr pack

## 3M™ Underseal

A polymer based underbody coating provides excellent corrosion protection and is resistant to any type of wash including diesel wash. The pack is a ready to use pack and can fit directly to 3M underbody gun.

- Ready to use
- No mixing required
- Easy to apply with aftermarket gun
- Texture same as new vehicle



### Pack Details

- Available in 1 Kg pack

## 3M™ Chain Cleaner

3M™ Chain cleaner has been specifically designed to clean and enhance the longevity of heavy duty O ring chains. The low volatile formula penetrates deeply and easily removes heavy mud, rust and other chain contaminants for an effortless cleaning.

- O- Ring safe and low VOC formula
- Contains corrosion inhibitors
  - prevents rust
- Penetrates deep into the pins and plates of the chain
- Effectively removes dust and rust from the chains



Shake the can well before use. Point towards the area of application and apply from a distance of 100-200 mm. Spray evenly and wipe the chain surface with brush to remove sticky dust. Wipe the chain with dry cloth after application. Repeat steps 1- 4 in case of sticky dirt

### Pack Details

- Available in 75g, 475g

## 3M™ Chain Lube

3M™ Chain lube is long lasting protection of transmission chains against wear & tear. Special formula provides deeper penetration between plates and rollers and protects the O rings inside the chains as well. The bio-degradable formula is extremely safe to use and easy to apply.

- Conditions & protects the rubber O rings on heavy duty chains
- Contains corrosion inhibitors
  - prevents rust
- Best in class dust repulsion
- Excellent penetration between the chain components
- Bio-degradable
- Easy to use and low wastage



Clean the surface of the chain using 3M™ chain cleaner. Hold the can with nozzle pointed towards the application area. Use the extension tube to pin point the area of application. Spray evenly from a distance of 8 - 10 cm.

### Pack Details

- Available in 75g, 325g



## Engine Crankcase Flush (For 4 stroke 2 wheelers)

3M™ Engine Crankcase Flush is a fast acting, easy to use cleaner, Intended for use in 4 stroke, 2 wheeler engines.

- Removes sludge and other deposits
- Cleans engine and prepares for new oil
- Safe enough to use during every oil change



- With engine off, add 3M™ Engine Crankcase Flush to existing old oil in the engine.
- Treat Rate: Use full content for one engine. Start & run engine for 10-15 minutes.
- Increasing engine RPMs may help distribute the Engine Crankcase Flush more thoroughly.
- Drain dirty oil and dispose it as per local regulations.
- Replace oil filter.
- Refill with fresh oil that meets the manufacturer's specification.

### Pack Details

- Available in 50ml

## Engine Oil Plus (For 4 stroke 2 wheelers)

3M™ Engine Oil additive is designed to reduce friction of critical engine parts in 4 stroke, 2 wheeler engines.

- Helps improve engine performance and power
- Reduces build up of harmful deposits
- Compatible with all types of motor oils



- With engine off, add 3M™ Engine Oil Plus to crankcase along with new oil. For best results add during every oil change.
- \* Treat Rate: Use full content for one engine
- \* Do not overfill oil, if necessary, reduce the amount of added oil to the crankcase
- \* Check the oil level

### Pack Details

- Available in 50ml

## Petrol Tank Additive (For 2 wheelers)

3M™ Petrol Tank Additive is a detergent formula for all petrol engines. Improves ignition quality. Restores and maintains optimum fuel economy.

- Prevents corrosion in the fuel tank & fuel lines
- Prevents power loss & improves acceleration, reduces exhaust emissions
- Reduces knock, noise, misfire, ignition delay and crank time
- Results in easier cold starts and better warm up
- Cleans gum and carbon deposits in fuel system



### Pack Details

- Available in 25ml

## 3M™ All-in-One Shiner

An excellent All in one solution to protect and shine various substrates including Vinyl, Leather, Plastic, Tyre and Engine surface.

- Produces rich look finish on plastic and rubber surfaces
- Non sticky effect and does not allow dust to settle
- Durbale Finish
- No repeat clean up



### Pack Details

- Available in 100ml, 250ml pack

## 3M™ Car Wash Shampoo

3M™ Car Wash Shampoo generates the highest amount of foam as compared to other similar products in the market. Extremely effective with hard water too especially critical considering the large number of customers who use bore well water/tanker water for washing their cars. 3M™ Car Wash Shampoo is safe on paint & does not affect the wax on the car's surface.

- PH balanced, easy rinse-off rich foam formula
- Removes tough dirt & road grime
- Safe on paint
- Effective with hard & soft water



### Pack Details

- 250ml, 500ml, 1 Ltr

## 3M™ Dashboard Dresser

Wide application on dashboards, door panels, trims, etc. Formulation gives higher gloss than competition. Non-greasy formulation makes for easy d-i-y application. Pleasant fragrance makes it appealing for customers to use it.

- Restores deep black new look to the dashboard of the car
- No sticky effect and does not allow dust to settle
- Durable finish



### Pack Details

- 250ml, 500ml

## 3M™ Tyre Dresser

Formulation designed to give a rich, glossy look to tyres. Leaves higher gloss. Easy application. Non-greasy formula makes application less messy for car owners. Pleasant fragrance which makes it appealing for customers to use it on their own in the diy fashion. At an average frequency of one application per week – a 500 ml bottle lasts for 5 months.

- Ready to Use formulation
- Long Lasting Gloss
- Helps prevent fading & cracking of tyre
- Non-greasy formula does not attract dust



### Pack Details

- 250ml, 500ml

## 3M™ Glass Cleaner

Superior solvents ensure quicker removal of contaminants on glass with minimal effort. It's a zero ammonia formulation which has no unpleasant smell and is safe for the user as well as the environment. Spreads easily on the glass to give superior results. It doesn't leave behind any residues. No clean up issues on overspray.

- Ready to use, streak free finish on glass
- Safe on all glass, metal & plastic parts
- Easily removes filmy residues, road grime, etc



### Pack Details

- 250ml, 500ml



## 3M™ Microfiber Cloth

3M™ Microfiber Cloth is a unique, super-soft, non-linting cloth designed to remove oily or filmy residue including waxes, polishes, glazes and fingerprints without scratching or streaking delicate surfaces. It is ideal for painted/clear coated surfaces, chrome, glass, dashboards, and more.

- Excellent water and dust absorption
- Gives excellent finish after application of wax, polishes, glaze, etc.
- Cleans well without streak marks



### Pack Details

- 40.64 cm x 40.64 cm

## 3M™ Acrylic Foam Tape

3M™ Acrylic foam tape is a medium-density, gray acrylic foam tape with acrylic adhesives. 3M acrylic foam tape is characterized by good peel and shear adhesion, high initial adhesion, good low temperature application performance. Typical applications would include side visor, wheel weight, spoiler, gas doors ornamentation, additional mirror, wind seal, personalization logo, etc.

- Medium density gray acrylic foam tape with acrylic adhesive
- Good peel and shear adhesion
- Very high initial adhesion



### Pack Details

- 12mm x 4mtr, 12mmx10mtr, 24mm x 4mtr, 24mm x 10mtr





Science.  
Applied to Life.™

**3M India Limited**

Industrial Retail Business

Concorde Block, UB City

24 Vittal Mallya Road, Bengaluru - 560 001

Tel: +91 80 2223 1414 • Fax: +91 2223 1450

[www.3M.com/in](http://www.3M.com/in)

All product details and images given in this catalogue are for representation purpose only and all reasonable efforts have been made to ensure the accuracy of the information. However, 3M cannot be held responsible for any errors or omissions. 3M reserves the right to make changes to the catalog and its products, product specifications, pack sizes etc. at any time without prior notice. All text, images, graphics and other materials in this catalogue are subject to the copyright and other intellectual property rights of 3M India Ltd.